

The BRIDGE

Volume 27: Issue 10 October 2014

The Newsletter of the Friends of Rock Bridge Memorial State Park

News from the Friends of Rock Bridge Memorial State Park (FoRB)

Friends of Rock Bridge Memorial State Park is a membership supported 501 (c)(3) organized to promote understanding, appreciation, enjoyment and preservation of Rock Bridge Memorial State Park and the surrounding area. email: weaverjc@missouri.edu, address: FoRB, P.O. Box 7642, Columbia MO 65205-7642 website: <http://www.friendsofrockbridgemsp.org/>

President's News – Kevin Roberson – Fall Changes, More Improvements for Hickam Cabin

Greetings to my fellow Rock Bridge friends. Beautiful weather we are having. It is a good time to catch one last dose of ticks and chiggers before the first frost. The leaves are just starting to change, with the persimmons are leading the way. Speaking of persimmons, they are loaded with fruit this year. My trees are bent over almost double. Make some nice bread or wine.

The Missouri State Parks has approved our suggestion to put a wood floor in the Hickam cabin and we are just waiting to get a proposal from the committee and a plan for approval by the Board and Park staff. We will keep you posted as we learn more.

One of the many positive outcomes of the Hickam Cabin project has been the involvement of the broader community in concern for the outcome. If we could find some way to continue this involvement in the future, we would be able to accomplish much. Please call or email with suggestions.

If you wish to work with us to improve our community and help support the park and park staff, drop me an email and we will sign you up. robersonkw@gmail.com

Enjoy! Kevin Roberson, President, FoRB Board

NEXT FRIENDS BOARD MEETING: Monday October 20, 6:30 pm, Park Office

Rock Bridge Renewal – Saturday November 1, 8:30 to 11:30, Devil's Icebox Parking Lot
Help take out Invasive Plants, Old Fencing, and Trash.
Please email Jan at weaverjc@missouri.edu or call 573-424-9438 to register

Officers and Directors - 2014 Officers: President: Kevin Roberson; Treasurer: Jan Weaver, Secretary: Brennan VanMatre, 2014 Directors: Bill Hobbs, Sue Tillema, Scott Schulte

News from Rock Bridge Memorial State Park

Park Superintendent News – Jim Gast: Fall Color

It's the first day of autumn as I write this. Looking out my office window, I can see a few trees with some red, orange or yellow leaves. It won't be long and they'll all be changed.

Speaking of fall colors, Missouri State Park staff will once again be conducting fall color trams tours on the Katy Trail. The tours are October 14th and 15th. It's great way to see the trail from Rocheport to McBaine while learning about the natural and cultural history of the area. Tours are at 8:30, 11:00, 1:30 and 4:00 on both days. Call 573-449-7422 Monday thru Friday, 8:30 to 4:30, to make your reservation. There is a suggested donation of \$5.00 for adults and \$3.00 for children twelve and under. Once again, Boone Electric Coop is providing the trams.

The sewer system is in place and the streets are almost installed in the Parkside development.

Naturalist News – Roxie Campbell: Team Monitors Life of Devil's Icebox Cave

Every spring and fall, a team of park staff and volunteers enters Devil's Icebox Cave to check on the pink planarians and other animals that share their aquatic home. We call this our Pink Planarian Project or P3 for short. We visit three 5 meter survey plots where two surveyors kneel in the cold water, pick up each and every rock, identify and count the critters and call it off for the person recording the data. On 9-13-14, the total number of pink planarians was low (4), but the survey was not designed to determine total population numbers, rather to follow changes over time at these preferred habitat locations. The Pink Planarian is a species of flatworm that hasn't been found to live in any other location other than the Devil's Icebox Cave system. It has a brain, nervous system, both male and female sexual organs and is a predator in the cave ecosystem. While in the cave for the 9-13-14 P3 trip, we also observed about 3,000 gray bats, a spotted salamander, noticed erosion of mud embankments and beautiful calcite deposits.



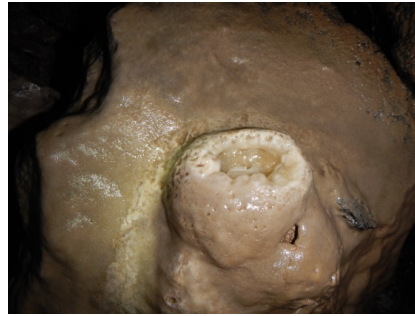
A large pink planarian (30 mm) moved on this rock held by a gloved hand



We were excited to find what appeared to be a fossilized herbivore tooth. According to expert assessment, there is a very good chance it belonged to a beaver!



Typically, spotted salamanders live on the land surface, but can survive if they find themselves living in a cave as this one did



This little stalagmite caught our attention

Know the Dark



Saturday
October 18
7 to 9 pm

Free. Recommended for ages 6 and up. Registration is required. Call 573-449-7400

- Experience the sights and sounds of night by going on a guided night hike
- Discuss the adaptations of many nocturnal animals such as bats and owls
- Learn how they use special senses such as echolocation to capture prey in the dark
- Find out about triboluminescence and test your night vision by participating in hands-on activities

Connor's Cave Tours available on Sundays from 1:30 to 4:00 PM through October 12; then the cave will be closed for the winter hibernation season.

FoRB Membership: To join, clip and mail this section with your check to : FoRB; P.O. Box 7642; Columbia MO, 65205-7642

\$15	park staff/volunteer, senior, student
\$20	individual
\$35	family
\$100	supporting

FoRB is a 501 © (3) organization and donations are deductible to the extent allowed by law

Name _____

Phone # _____

Address _____

Email _____

FoRB
P.O. Box 7642
Columbia MO 65205-7642

October 2014 Issue

President's News: Fall, Hickam Cabin
Superintendent's News: Fall, Parkside
Naturalist News: Cave Team

SAVE THE DATE: ROCKBRIDGE RENEWAL NOVEMBER 1